



St. Matthew's Row
London, E2 6DT

£750,000


ESTATES

Elms Estates are delighted to be able to bring to the market For Sale this Three Double Bedroom Terraced Feehold House arranged over three floors and benefiting from Off Street Parking to the front and its Own Rear Garden.

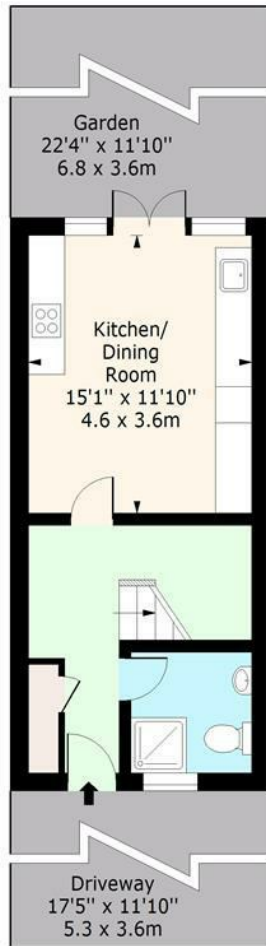
The property is located directly on St Matthews Row and opposite the historic St Mathews Church, built in the 18th Century and with beautiful grounds and gardens to be enjoyed. You are also within a short walk of the Iconic Brick Lane and Fashionable Shoreditch areas located within the heart of the East End and offering excellent access to all of the Transport, Restaurants, Bars, Shops, Markets, Gyms, Parks, Galleries and Museums this Exciting Area has to offer.

The ground floor of this property comprises a good-sized Kitchen/Dinner with large French Doors leading directly to the paved Rear Garden and there is also an additional Shower Room. The First Floor has a good sized Reception Room with Large Double Glazed windows over looking the garden and the first of Three Double Bedrooms. The second floor comprises two further Double Bedrooms and a Family Bathroom.

St Matthews Row is available For Sale with no onward chain and would make the ideal family home.



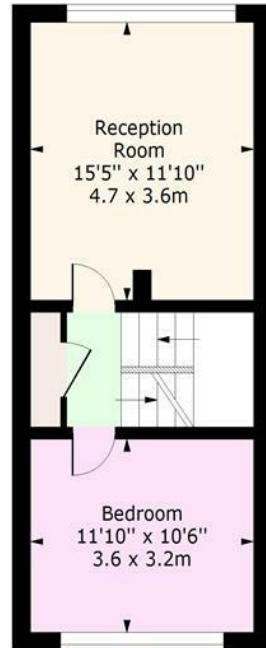




Ground Floor

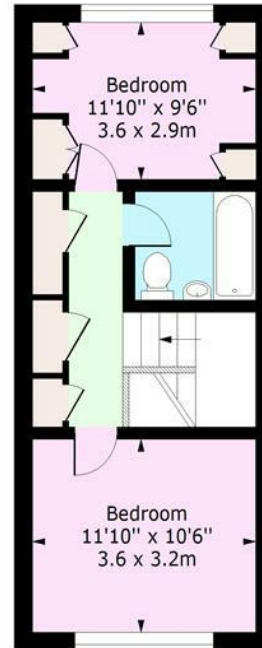
Floor Area 354 Sq Ft - 32.89 Sq M

St Matthews Row, E2
Approx. Gross Internal Area 1158 Sq Ft - 107.59 Sq M



First Floor

Floor Area 402 Sq Ft - 37.35 Sq M



Second Floor

Floor Area 402 Sq Ft - 37.35 Sq M

For Illustration Purposes Only - Not To Scale
www.lpaplus.com

